

Evidence of Performance

Testing the joint characteristics of a sealing system between window and building structure in new condition and after a series of simulated short-time exposures



Test Report

No. 16-003313-PR02

(PB-E03-020310-en-02)

Client	Soudal N. V. Everdongenlaan 18-20 2300 Turnhout Belgium
Product	Sealing system between window and building structure
Designation	Sealing internal: Brushable and sprayable joint sealing membrane Soudatight LQ/SP ① Sealing external: Brushable and sprayable joint sealing membrane on hybrid basis Soudatight Hybrid ② Joint insulation: Polyurethane foam Flexifoam B2 ③
Installation position Boundary conditions	Hollow block wall with flush reveal. PVC window 1,230 mm x 1,480 mm, mounted to centre of wall reveal. Attachment to sides and top of building structure using frame anchors without plug. Fasteners on sides spaced at ≤ 700 mm. Dead load accommodation via setting blocks at bottom. Side positions secured by diagonal blocking. External and internal seal using brushable joint sealing membranes. Joints filled on four sides with polyurethane foam (in-situ foam) Processing as specified by client
Scope	Internal airtight and external watertight joint between external wall and window / casement doors in PVC with equivalent details, as described above.
Special features	Air permeability was tested with external seal and filled joints. Watertightness was tested with filled joints

Result

Air permeability up to $\pm 1,000$ Pa in new condition

$$a < 0.1 \text{ m}^3/[\text{m h (daPa)}^{2/3}]$$

Watertightness up to 600 Pa in new condition

No water penetration

Air permeability up to $\pm 1,000$ Pa after simulated short-term exposures (temperature, wind, use)

$$a < 0.1 \text{ m}^3/[\text{m h (daPa)}^{2/3}]$$

Watertightness up to 600 Pa after simulated short-term exposures (temperature, wind, use)

No water penetration



ift Rosenheim

20.07.2017

Thomas Stefan, Dipl.-Ing. (FH)
Head of Testing Department
Building Component Testing

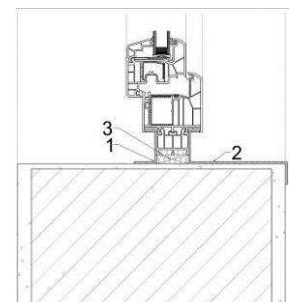
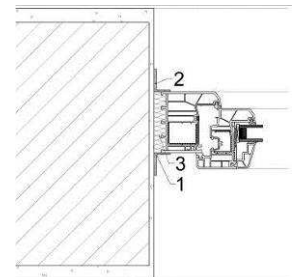
Thomas Krichbaumer
Operating Testing Officer
Building Component Testing

Basis:

ift Guideline MO-01/1 : 2007-01
Wall connection of windows,
Part 1: Verfahren zur Ermittlung
der Gebrauchstauglichkeit von
Abdichtungssystemen, 2007-01
(Wall connection of windows,
Part 1: Determination of fitness
for use of sealing systems)

Test Report 16-003313-PR02
(PB-E03-020310-de-02) dated
03.02.2017

Representation



Instructions for use

This test report serves to
demonstrate the above charac-
teristics.

Validity

The data and results given re-
late solely to the tested and de-
scribed specimen.

Notes on publication

The ift Guidance Sheet
"Conditions and Guidance for
the Use of ift Test Documents"
applies.
The cover sheet can be used
as an abstract.

Contents

The report comprises a total of
24 pages.